

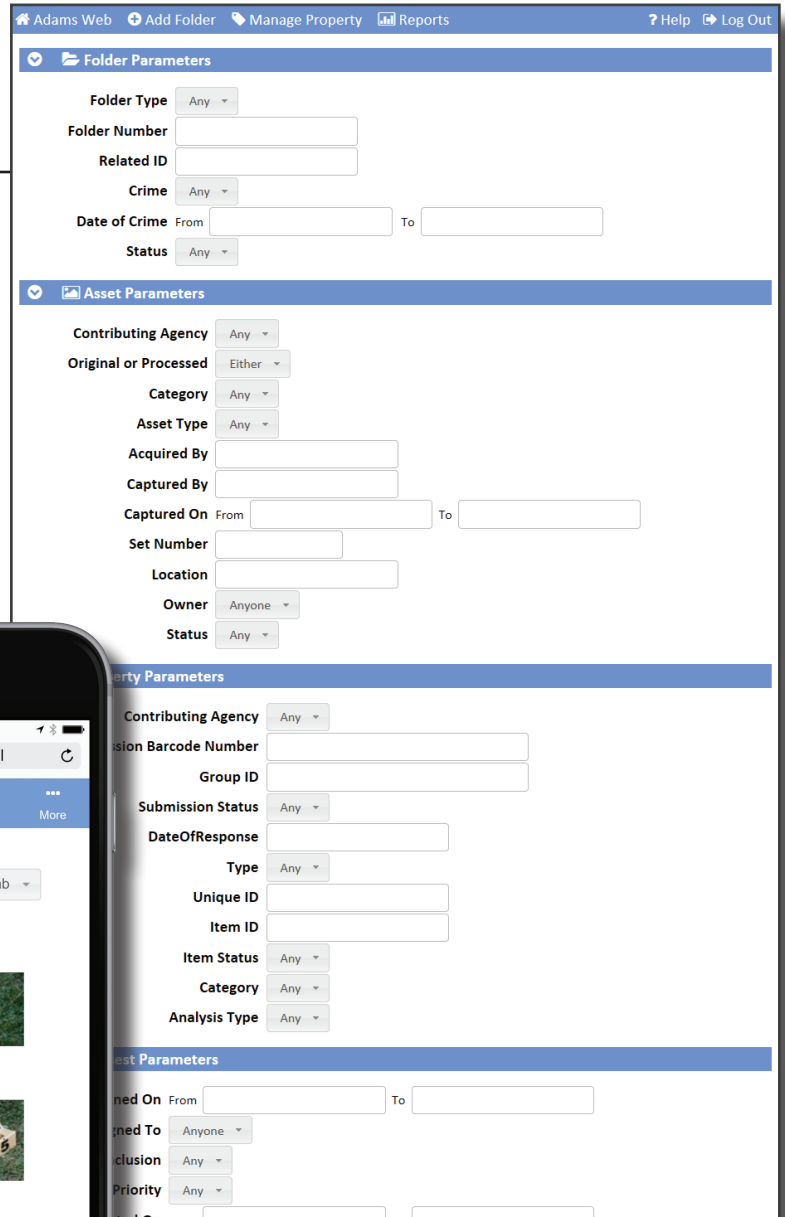
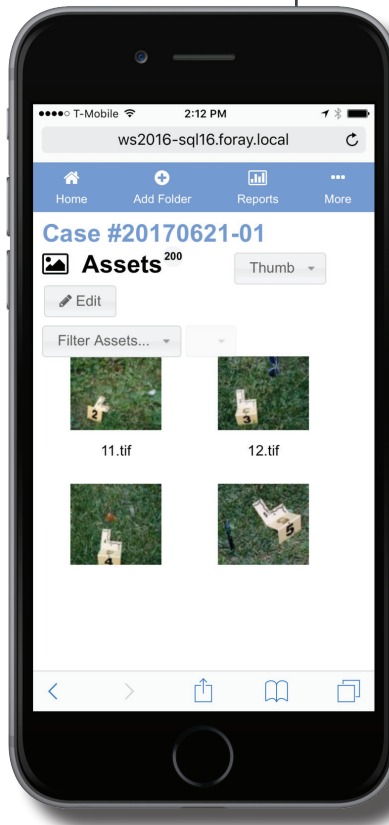


The ADAMS Crime Scene Photo/Video solution is a tool for storing, securing, locating, and controlling digital evidence gathered at crime scenes. It provides browser-based viewing of cases and digital evidence, along with comparisons of originals and processed copies. It authenticates all originals and only allows processing of copies. Crime Scene Photo/Video displays asset acquisition information (such as camera EXIF data), history of processing, and an audit trail of all access to the digital asset.

Highlights

Search cases. Find your videos or photos by case number, crime type, date of crime, category, who acquired the photo/video, property item ID, analysis type, any key word, along with a multitude of other parameters to help narrow your search.

View file information. Display thumbnails along with file information such as file name, exhibit name, description, acquired by, width and height, file size, resolution, etc.



Highlights continued

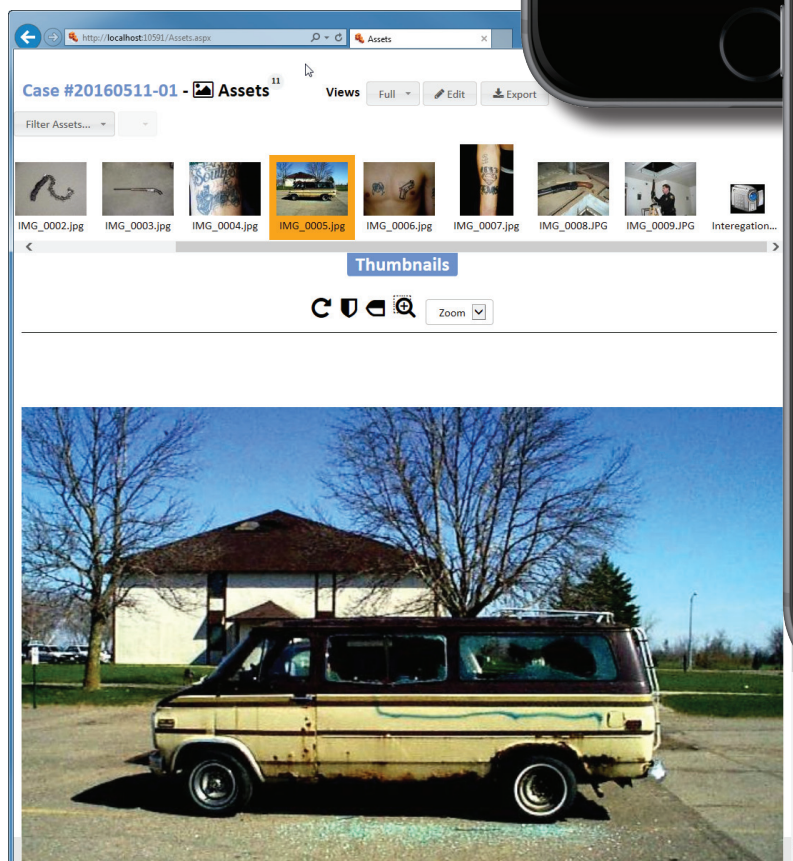
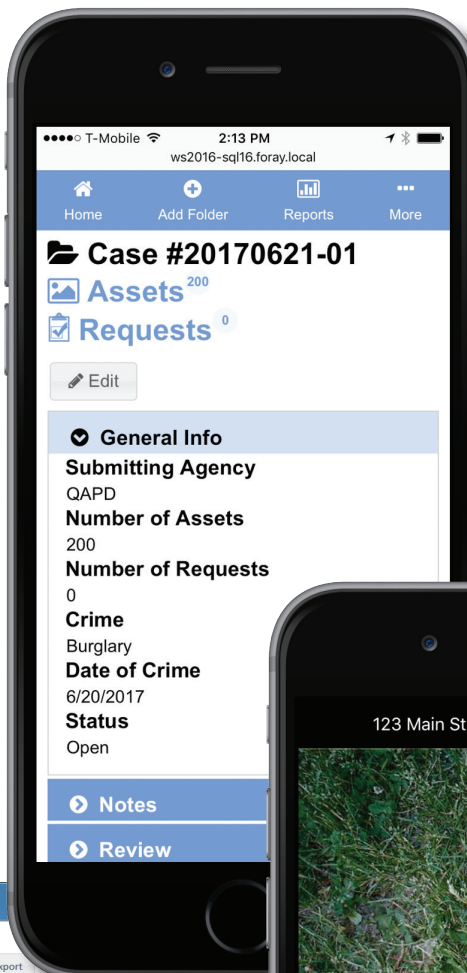
Work from anywhere. Work from any location that has access to the ADAMS photo/video repository.

View cases. From one screen, view recent cases, physical evidence, digital evidence and pending requests.

Select digital evidence. Select and view crime scene photos or videos.

Print photo/video file details. View and print all data associated with a photo or video, including EXIF camera data (for photos), processing history, chain of custody, case/file notes, etc.

Enter notes. Enter free-form, searchable notes specific to the review of a photo or video, or the processing steps taken, or on the relevance of that particular digital evidence to the case.



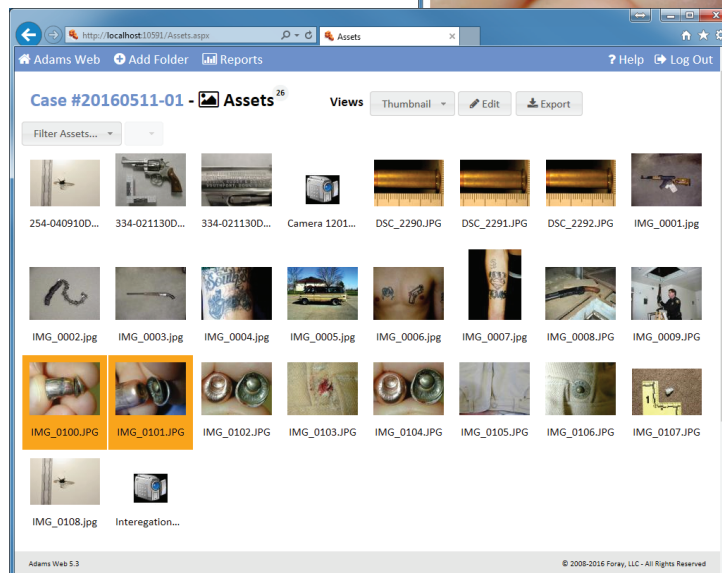
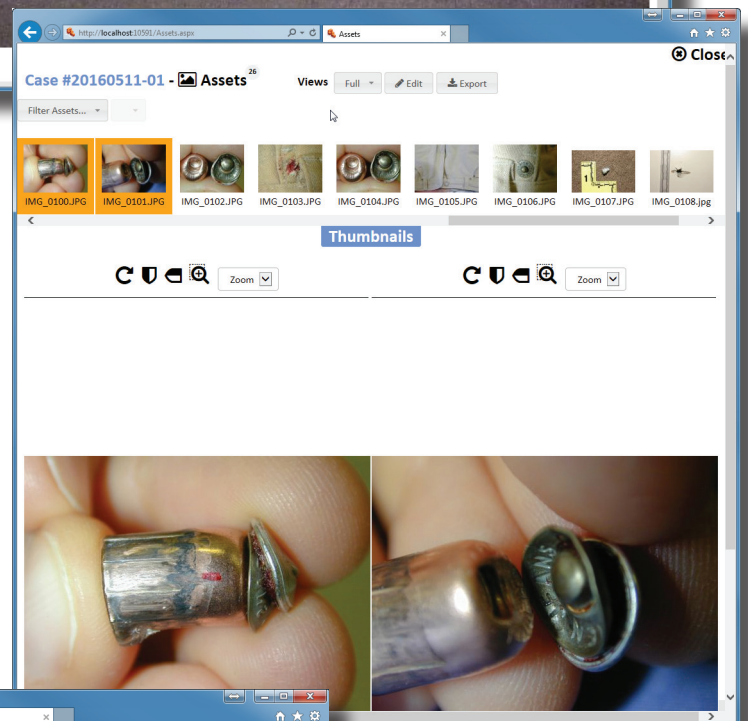
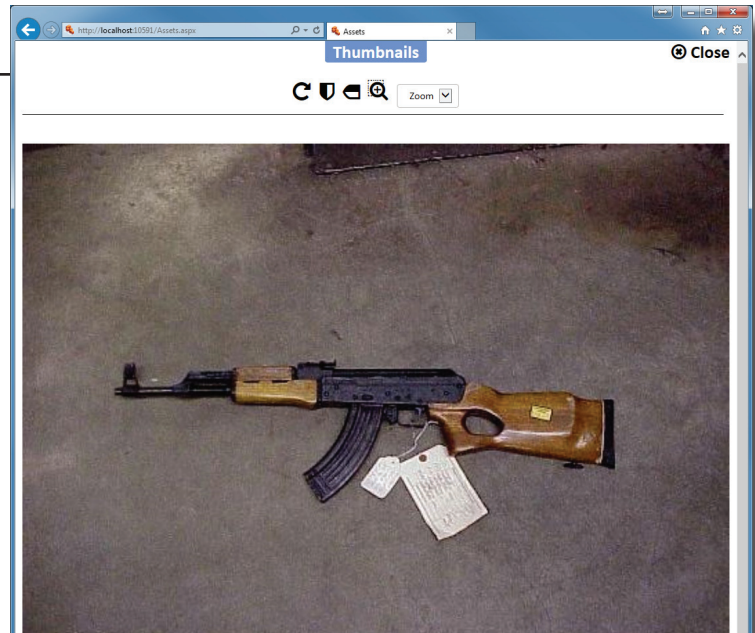
Highlights continued

View photos. Zoom, rotate and flip photos.

Compare photos side-by-side. Dynamically select photos to view side-by-side.

Display thumbnails rapidly. Quickly view and scroll through large numbers of thumbnails.

Take advantage of server-based image tiling. Use ADAMS server-based image tiling to view, pan and zoom very large image files. (Image tiling is similar to web-based maps that allow large images to be displayed quickly and efficiently, by transmitting over the network only those portions of images that the user is actually viewing.)



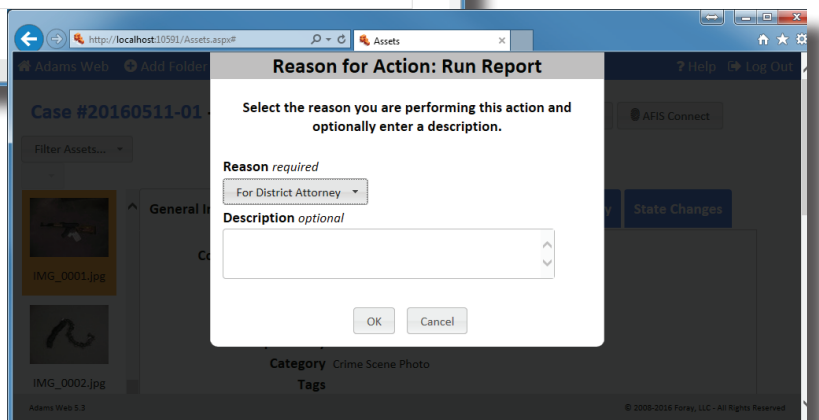
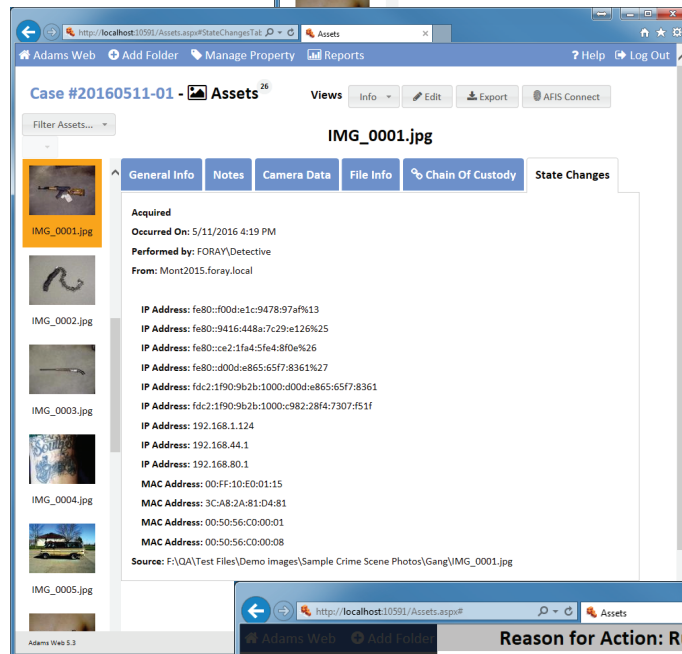
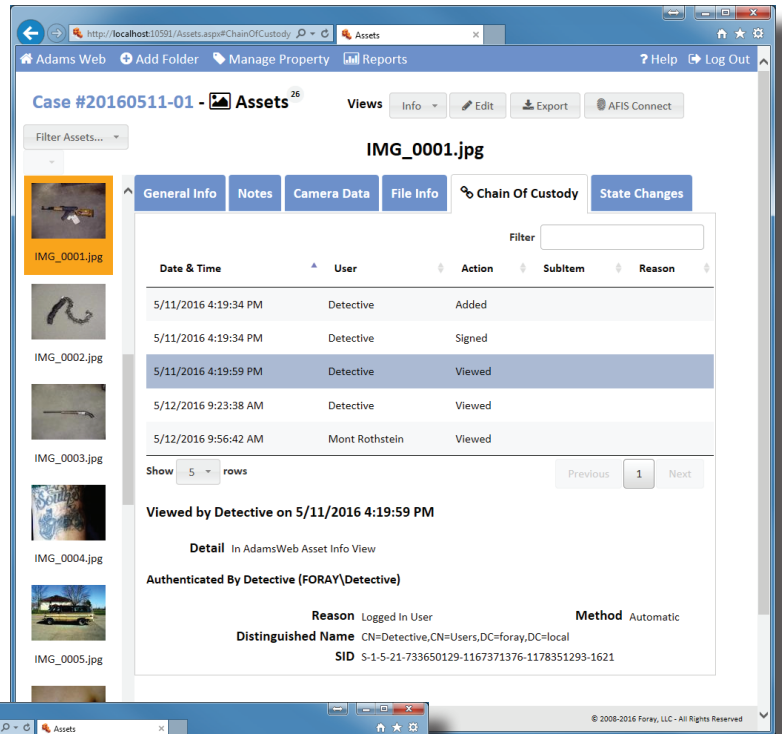
Highlights continued

Track chain of custody. View all changes made to photo/video details, including crime type, evidence category, notes, chemical and dye processing, lighting, etc.

Log reasons for actions. Require that users enter reasons for performing actions such as viewing, printing, or exporting.

View case-level changes. Display when a case was created, when it was viewed, and when sets of evidence were added.

Print reports. Print reports for selected assets or for an entire case.



Highlights continued

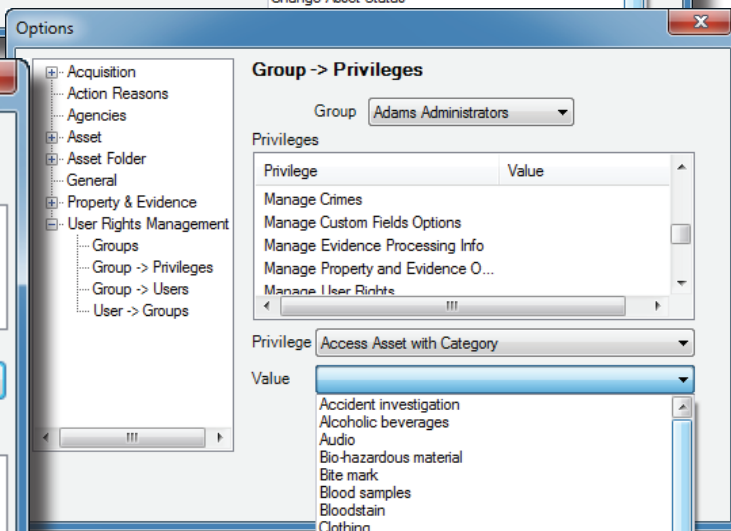
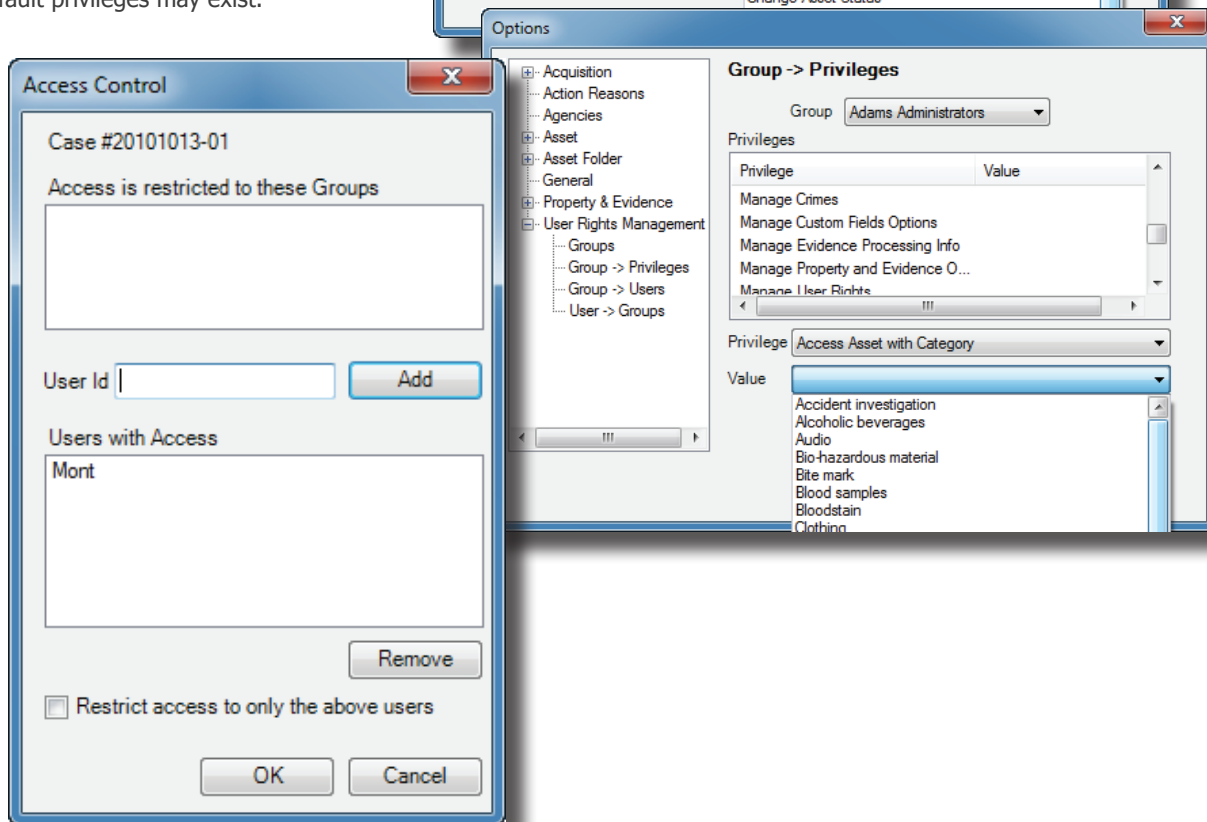
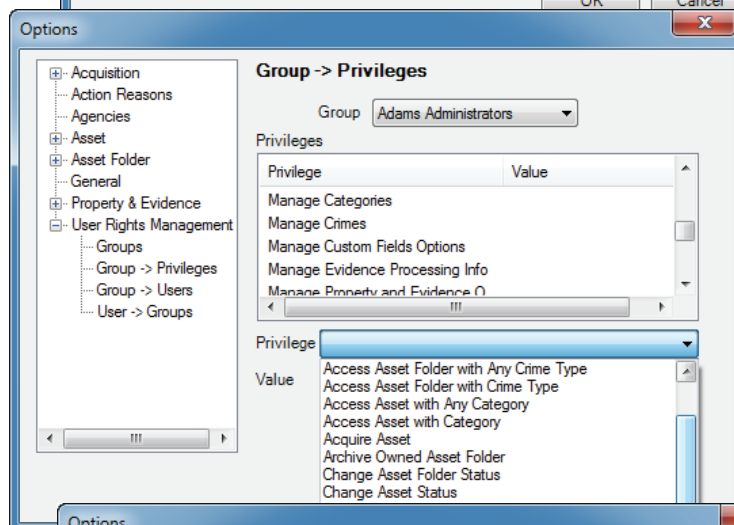
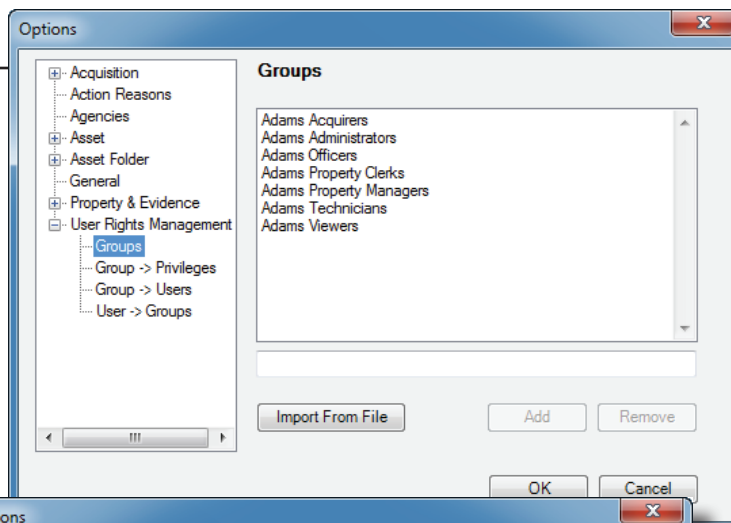
Create custom security groups. Set up security groups permanently or on an ad-hoc (related to an investigation/case) basis.

Integrate to a directory server. Access the agency's central user name and group name database (directory server) for user authentication and group membership verification.

Define privileges. Determine the privileges (archive, configure, delete items, manage folder types, etc.) to be assigned to each group of users.

Control access. Grant/restrict access to cases by crime type, to assets by user-defined categories, etc.

Override settings. For sensitive cases/investigations, restrict or grant access to individuals regardless of what default privileges may exist.



Highlights continued

Determine archive rules. Create multiple archive rules to be run automatically at periodic intervals.

Specify archive rule details and frequency. Set conditions upon which archive rules will run based upon evidence category, crime type, last modified date, etc., as well as how often that rule will run.

Make multiple CD/DVD copies. Specify the number of media copies to be made for various purposes such as case files or off-site storage.

Archive manually. Archive individual asset folders or assets as well as execute rules manually, as needed.

Run in unattended mode. Archive in unattended mode using a CD/DVD autoloader. Or, schedule automatic archives onto hard drives or storage arrays.

