



ADAMS Solution Guide

Latent/ACE-V

Latent Case Management and ACE-V Documentation

The ADAMS Latent Case Management and ACE-V Documentation (Latent/ACE-V) Module ensures complete compliance with SWGFAST's ACE-V guidelines, and provides an intuitive, browser-based process for documentation required as part of the latent case management record. The Latent/ACE-V Module allows users to create and maintain complete—and consistent—records that include annotated images of the latent prints and exemplars, as well as observations and other data relevant to the ACE-V process, together with a detailed chain of custody, case notes and reports. Users can display images for side-by-side comparison, prepare annotations (charting) on-screen, and customize the ACE-V processes based upon their agency's specific data requirements.

Highlights

Annotate. Create annotations for individual ridge impressions and/or comparison prints identifying ending ridges or bifurcations. Or, simply mark ridge events with a dot.

Examine. Place latent/palm print images side-by-side for detailed analysis and comparison.

Trace and highlight.

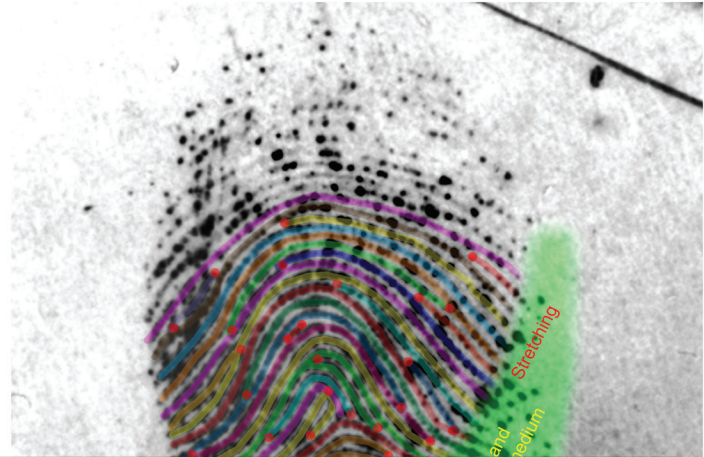
Trace ridge flows, add text and highlight complex areas within the print(s).



Case No. 20160605-154

Lab No. 16-1379

Exhibit No. 17-A

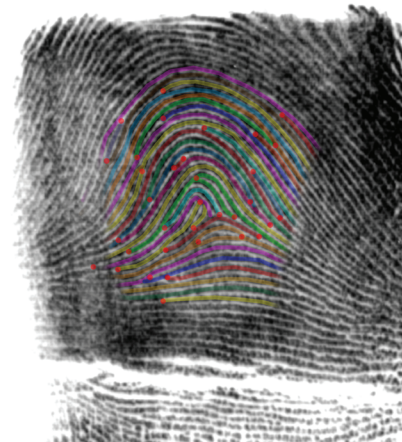
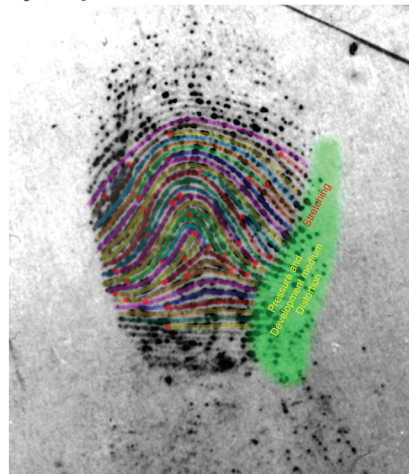


Case No. 20160605-1549

Lab No. 16-1379

Exhibit No. 17-A

Exemplar ID 134679258
Finger No 3



(500% Magnification)

NOTE: This is a graphical illustration of a representative sample of the ridge characteristics used in the comparison of the above images.

Examiner Initials: DMW

Date: 11/11/2016

Highlights continued

View workload. Display a list of requests for a case.

Manage requests. Enter detailed information related to assigned requests using flexible, user-defined fields.

Modify the process. Change the Latent Case Management and ACE-V process to conform to a new SOP or to new accreditation requirements.

Create Request

Request Type required

Select...
 Select...
 Evidence Processing
 Latent Print Processing, Analysis and Comparison
 Subpoenas Received

OK Cancel

Create Request

Request Type required

Latent Print Processing, Analysis and Comparison

Priority required

High

Assign To required

Me

OK Cancel

Adams Web Add Folder Reports Help

Case #20161130-0123 - Requests 3

New Request New Sub-request Priority Assign Cancel Reports (Select a request) Run Report Filter

#	Status	Priority	Type	Assigned On	Assign To
1	Assigned	Low	LCM ACE-V	12/09/2016	David Witzke
2	Assigned	Low	Latent Print Processing, Analysis and Comparison	01/19/2017	David Witzke
3	Assigned	Low	Subpoenas Received	01/19/2017	David Witzke

Show 5 rows

No request selected


General Info Details Chain of Custody

Adams Web

Case #20161130-0123 - Latent Print Processing, Analysis and Comparison - Request # 4

Step: Latent Impressions

Impression

Item Number required: 1-b Latent Number required: 17A Latent Impression required:  Set 1 - DC4L1003.tif 78QQ-SP88-WNIC Asset Number: 6

Impression Analysis

Impression Type required	1st Level Detail required	2nd Level Detail required	3rd Level Detail required	Clarity optional	Clarity description optional	Red Flags optional	Suitability required	Reason for suitability decision optional	Remarks optional
1st joint	Double Loop Whorl	Detail present	Detail present	Fair	Multiple Impressions, including overlapping prints	6 selected	Select...	Select...	

Previous Next

Highlights continued

Analyze. Document the anatomical source, orientation and presence of level 1, 2, and 3 detail as well as substrate, development medium, preservation method and other factors such as matrix, deposition pressure, movement, etc.

Compare. Record information relied upon by the latent print examiner during the comparison process and include high-quality, high-resolution, full-color digital images of the known print(s) used for the individualization of each latent print.

Evaluate. Enter conclusions of latent prints that are individualized, excluded, or for which a decision is inconclusive.

Verify. Manage and document verification steps as well as consultation and conflict-resolution processes.

Request #2 - "Latent Print Processing, Analysis and Comparison"

General Info | Details | Chain of Custody

Evidence Receiving

1. Submission
 Examination Start Date 1/19/2017
 Latent Prints Section Description Two glass beverage bottles with labels possibly bearing latent impressions

Processing Required: Yes/No

Are there items that require processing Yes

Initial Examination

1. Visual Examination

Item No(s) 1a
 Visualization Method Visual with ALS; Visual with white light
 ALS Wavelength 450nm;455nm;470nm
 Goggle/Filter Color (used with ALS) Red;Yellow
 Is Ridge Detail Visible? No
 Is processing required? Yes

2. Visual Examination

Item No(s) 2a
 Visualization Method Visual with white light
 Is Ridge Detail Visible? No
 Is processing required? Yes

Evidence Processing

1. Processing Methods

Item No(s) 1a
 Processing Method Cyanoacrylate;DFO

Adams Web

Case #20161130-0123 - Latent Print Processing, Analysis and Comparison - Request # 4

Step: Initial Examination

Visual Examination

Item No(s) required	Visualization Method required	ALS Wavelength optional	Goggle/Filter Color (used with ALS) optional	Is Ridge Detail Visible? required	Is processing required? required
1-a	Visual with ALS, Visual with white li	15 selected	Orange, Yellow, UV	Yes No	Yes No Method of Preservation
1-b	Visual with ALS, Visual with white li	15 selected	Orange, Yellow, UV	Yes No	Yes No Method of Preservation +

Method of Preservation

Is ridge detail suitable for further analysis? required	Reason why ridge detail is of no value optional	Documentation of Ridge Detail required	Image Number(s) optional	Notes: optional
Determination pending additional processing or enhancement		Digital Photo(s)	IMG_004 - IMG_007	

Previous Next

Adams Web

Case #20161130-0123 - Latent Print Processing, Analysis and Comparison - Request # 4

Step: Evidence Processing

Processing Methods

Item No(s) required	Processing Method required	Lot Number optional	QC (Print reacted as expected) optional	Alternate Light Source Used required	ALS Wavelength optional	Goggle/Filter Color (used with ALS) optional	Is Ridge Detail Visible? required	Is another processing method required? required
1-a	Cyanoacrylate	345E345E	Yes No	Yes No	Select...	Select...	Yes No	Yes No Method of Preservation
1-b	Cyanoacrylate	345E345E	Yes No	Yes No	Select...	Select...	Yes No	Yes No Method of Preservation +

Method of Preservation

Is ridge detail suitable for further analysis? required	Reason why ridge detail is of no value optional	Documentation of Ridge Detail required	Image Number(s) optional	Notes: optional
Select... Select... Yes No Determination pending additional processing or enhancement		Select...		

Previous Next

Highlights continued**Generate reports.**

Create custom reports for the Latent Case Management and ACE-V process.

Document

conclusions. Report on steps taken, comparison notes, and detail of conclusions so another examiner can determine what was done and interpret the data.

Prepare for

court. Gather data, comparisons, steps taken, and conclusions for use in court.

Identification Unit	Effective Date 04/06/2013	No Hit Notification Form
---------------------	---------------------------	--------------------------

NO HIT NOTIFICATION
(Victim / Elimination / Police Only Identified)

SIU Case Number: 20160622-123
Agency: San Jose Police Department
Agency Case Number: 64567568
Crime Code/Type: 187 Homicide
Victim(s):
Date of Incident: 6/22/2016
Number of Lift Cards: 12
Number of Digital Images: 15
Date Received: 6/21/2016
Submitting Deputy/Office: BECKER

AFIS SEARCHING:

AFIS Searched: Local AFIS;DOJ (State) AFIS;NGI (FBI AFIS)
Stored for Reverse Searches: Local AFIS;DOJ (State) AFIS

****NOTE: (V) was identified in this case.**

The latent cards received for this case are of AUTOMATABLE/USABLE quality. Analysis has/has not been conducted as indicated above for these latents by scanning against available AFIS databases with NO IDENTIFICATIONS. If no AFIS systems are identified in the AFIS Searched field above, the latents provided are of USABLE quality only (i.e., Only suitable for Manual Comparisons). Our examination for this case is complete.

- If your investigation leads to a potential suspect(s) and/or victim elimination(s), please provide their details to the shared email address below for a manual comparison to the prints submitted in this case.

OR

- If a reverse match is obtained from the unsolved latent database, you will be notified via an official report.

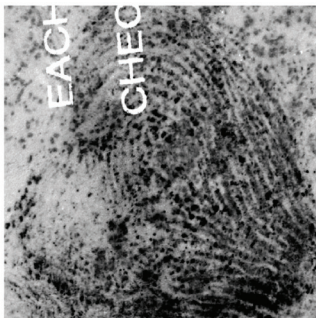
Any further enquiries regarding this case can be made via the shared mailbox:

so_idunit@sheriff.sccgov.org

Please quote the SIU Case Number for any such inquiries.



LIMS #: DEA TESTING
I.A. Case #: 11222013

LATENT PRINT EXAMINATION**Latent Impression**

NOTE: Orientation is up unless otherwise specified.

Image File Name: K4 Latent.tif

Exhibit Number: Exhibit 7a

Impression Number: 12354

Report Type: Original

Description: Latent impression developed on printed material.

Anatomical Source: Fingerprint

Level 1 Detail Present: Yes

Ridge Flow: Right Slant Loop

Level 2 Detail Present: Yes

Level 2 Detail: Ridge Endings;Bifurcations;Either Ridge Endings or Bifurcations-not clearly distinguishable

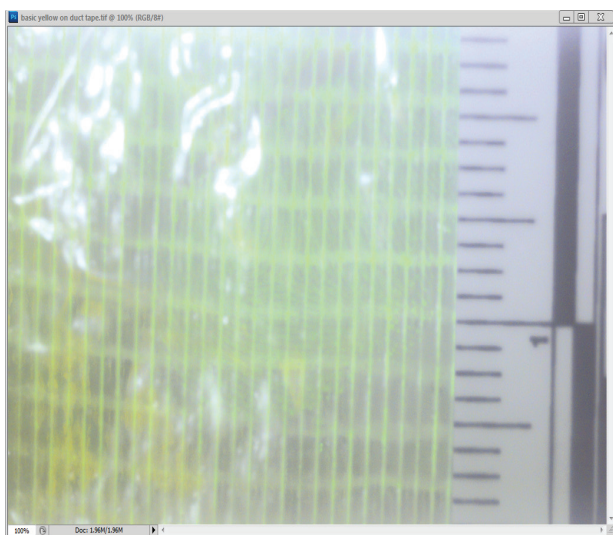
Level 3 Detail Present: Yes

Level 3 Detail: Ridge Shapes

Suitable for Identification: Yes

Complex Latent Print Factor(s): Non-contiguous ridge detail;Matrix distortion;Indistinct minutiae

Comments: Prints did not develop because of oil substance on paper.

Highlights continued**Before****After****Launch Foray ADAMS Filters from Adobe® Photoshop®.**

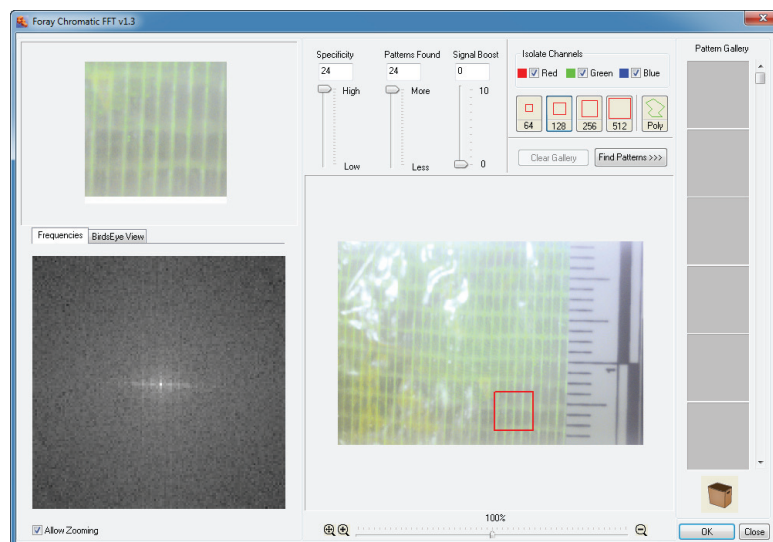
Launch the Foray Chromatic Fast Fourier Transform Filter from Adobe® Photoshop®.

Remove background patterns. Remove background patterns to make images clearer and easier to analyze and compare.

Zoom in. Using a sliding scale or mouse wheel, zoom in and select small, irregularly shaped portions of an image containing undesirable patterns.

Isolate color channels. Search for patterns using all three color channels, or selectively on one or two channels.

Identify unwanted patterns. Using the pattern gallery, identify unwanted patterns and drag them into the Trash Can while reviewing the effect of the pattern removal in the preview window.



Fine tune. Using the Frequency Palette, remove additional patterns by cutting frequency spikes.

Highlights continued

Launch AFIS Connect. Launch AFIS Connect to submit latent/palm print images to any or all of the major AFIS systems.

Preview image information during selection process.

Preview all image information before submitting the prints to AFIS, including EXIF camera data, notes, image history, and chain of custody. Reduce the chances of submitting the incorrect latent print or a print for which the calibration process is not yet complete.

Rotate before sending.

Rotate an image prior to sending it to AFIS.

Select multiple impressions.

Choose multiple impressions to be submitted to AFIS in a single batch.

Select multiple clips. For single images containing multiple prints (palm prints or multi-print images), select multiple regions of the image and submit all regions simultaneously to AFIS.

Configure multiple profiles. Configure AFIS Connect for all major AFIS vendors using system prompts for the configuration parameters specific to each vendor. Set up AFIS Connect for as many AFIS connections as necessary (local, state, federal, etc.).

